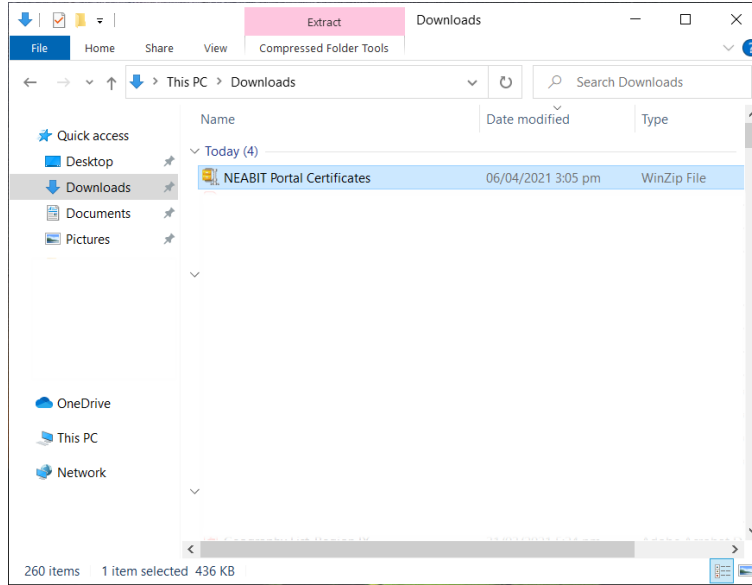


# NEA BIT Web Portal Security Certificate Installation Instructions

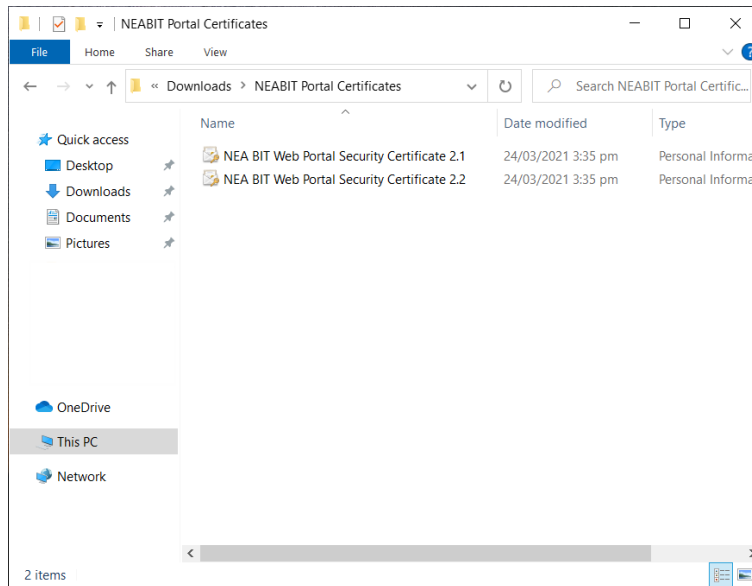
## Step 1

In the email sent to user, download the attached **NEABIT Portal Certificates.zip** file and save in your computer.



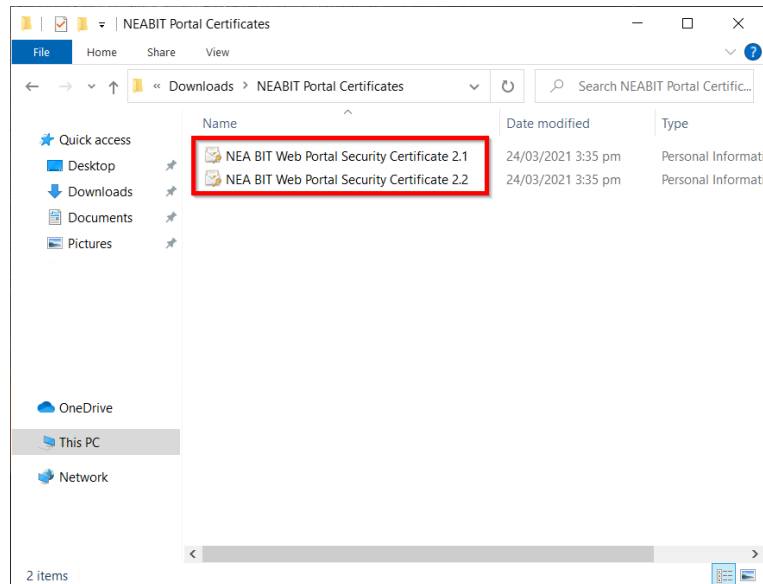
## Step 2

Unzip or extract the zip file and you will see the **NEA BIT Web Portal Security Certificate 2.1.pfx** and **NEA BIT Web Portal Security Certificate 2.2.pfx** files.



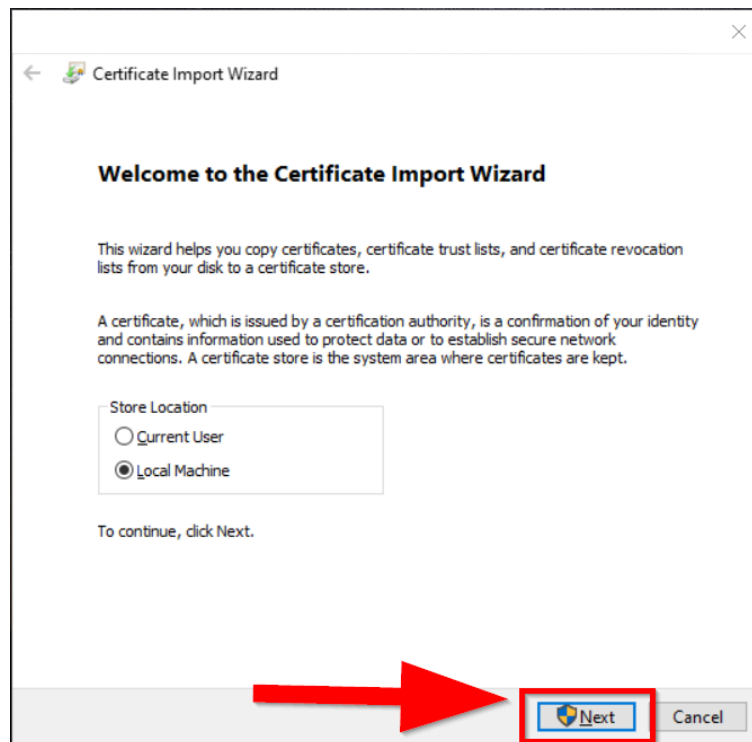
### Step 3

Ensure that your Chrome web browser is closed. Perform the following steps for the two files. Open the **.pfx** file



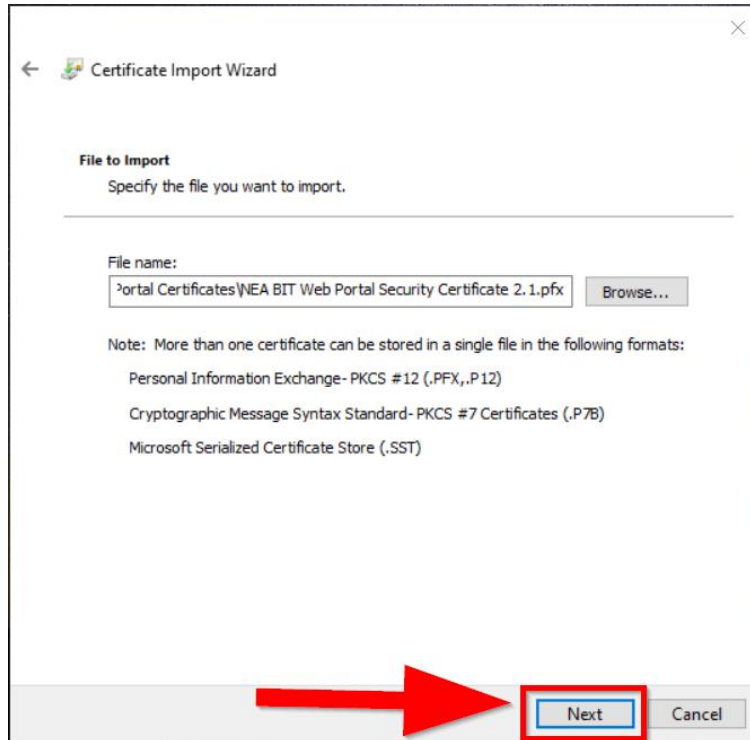
### Step 4

The **Certificate Import Wizard** appears. Select **Local Machine** as Store Location and click **Next**. Select **Yes** on the User Account Control pop-up message.



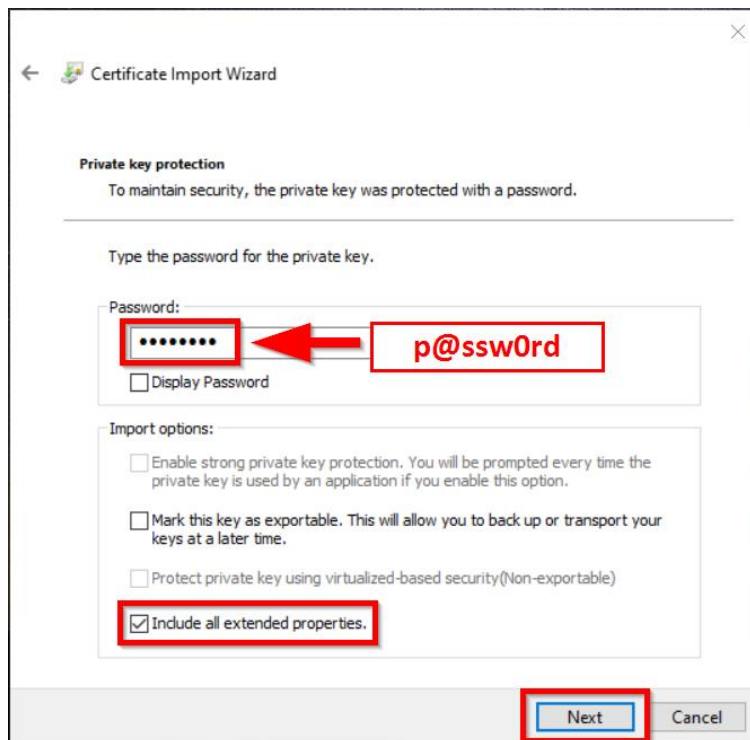
### Step 5

When asked to specify the file that you want to import, click **Next**.



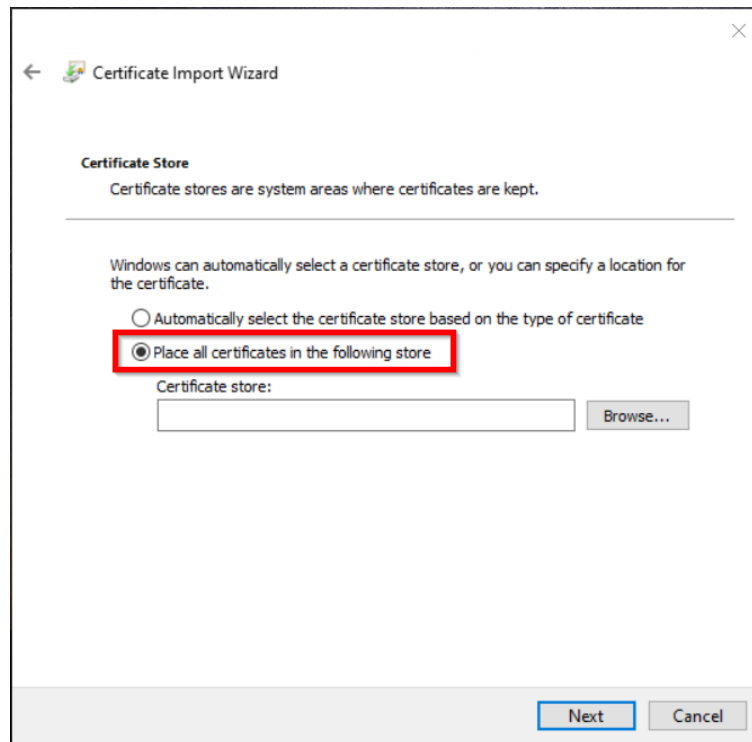
## Step 6

When asked to enter a password, type **p@ssw0rd**. Ensure that **Include all extended properties** is checked. Click **Next**.



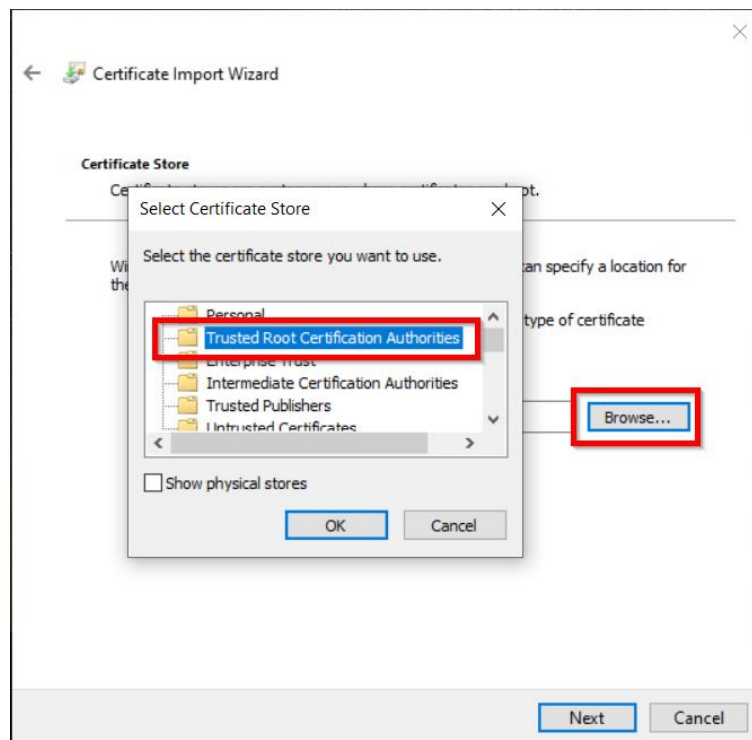
**Step 7**

Select **Place all certificates in the following store**.

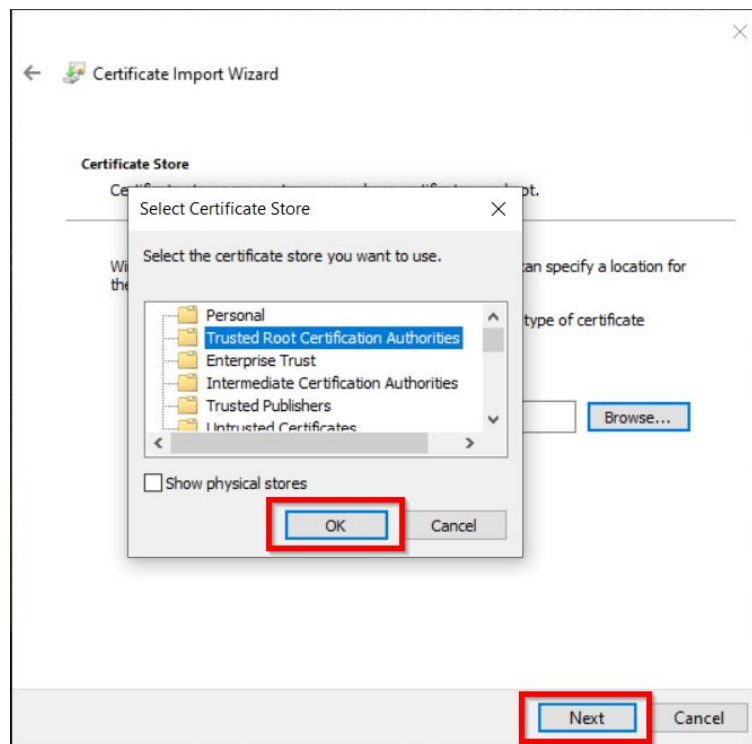


**Step 8**

Click **Browse**. The **Select Certificate Store** pop-up appears. Select **Trusted Root Certification Authorities**.



**Step 9** Click **OK** on the **Select Certificate Store** pop-up. Click **Next**.



**Step 10** Click **Finish**. **The import was successful message** appears. Please try logging in the NEA Web Portal.

