

H O U S T O N

Noca Instrument LLC

2800 Post Oak Blvd, Unit 4100

Houston, TX United States

Email: Info@nocainc.com

www.nocatab.com



T O R O N T O

Noca Inc

Noca Clean Energy

100 King Street West

Toronto, ON M5X 1C7

Email: Info@nocainc.com

www.nce.energy

www.nocainc.com

Mr. Collin Haughton: Owner and Manufacturer of Magnetic Transducer Generator



Petroleum Ltd.

Worldwide Distributor of NOCA Clean Energy. Magnetic Transducer Generator

Chairman: Baron Sir Andreas Harms Co-Chairman: HRH Prince Omar Kiram

Distributor in the Asia Pacific with Regional Center in the Philippines

1. Datuk Sir Eduardo L. La Madrid: Team Partner-Sales & Marketing

2. Engr. Domingo G. Ventura : Team Partner-Engineering

Contact No.: 0917 777 7389 or 0906 476 2476

OUR EQUIPMENT: THE MAGNETIC TRANSDUCER GENERATOR



The Difference between Diesel Generator and Our Magnetic Transducer Generator

Major Parts

Standard Diesel Generator

1. Diesel Engine
2. Alternator

NOCA Clean Energy MTG

1. Alternator Only

Technology Review

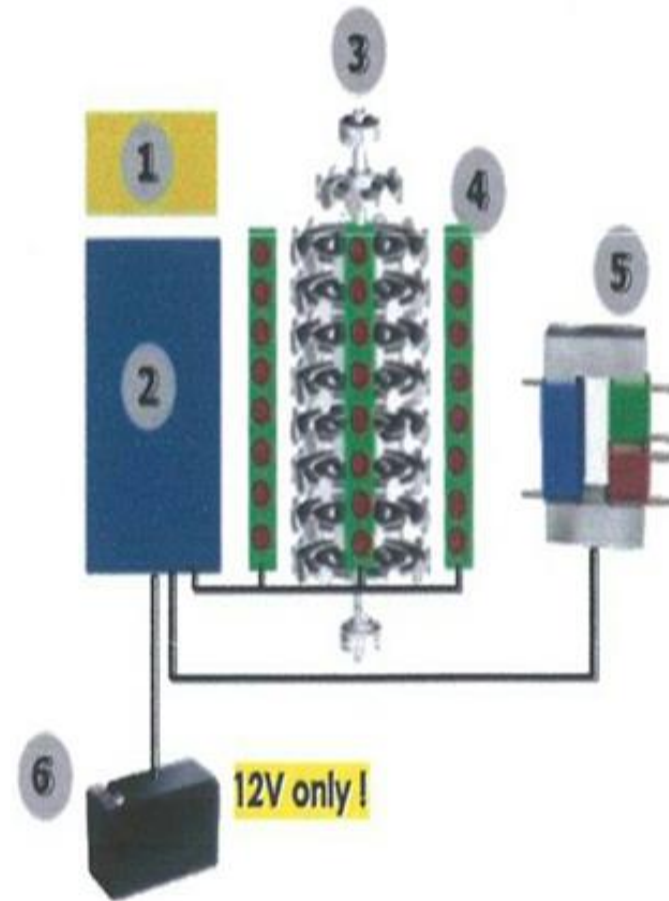
1. **Monitoring System** – All function processes as well as the output power management via the transformer.

2. **Power and System Management Moduls** – Controlled in dependence with the monitoring system.

3. **Magnetic Turbine** – Contains a number of rotors, each attached to a central spinning shaft. Each shaft is comprised of a series of discs with magnets attached to the perimeter of each disc.

4. **Intelligent Induction Elements** – Collects all output and directs a portion of the voltage back to the source battery to maintain rotational charge excess voltage is usable output.

5. **Transformer w/ Regulator** – Step Up/Step Down Voltage Converter with Regulator (Stabilizer) provides a stable source of power for all major appliances and sensitive electronic gadgets. It can also be made into a Step Up Power Transformer for Generation purposes.



6. **Battery (12V)** – Provides the initial voltage that engages the rotors.

TECHNICAL SPECIFICATIONS

A. Electrical

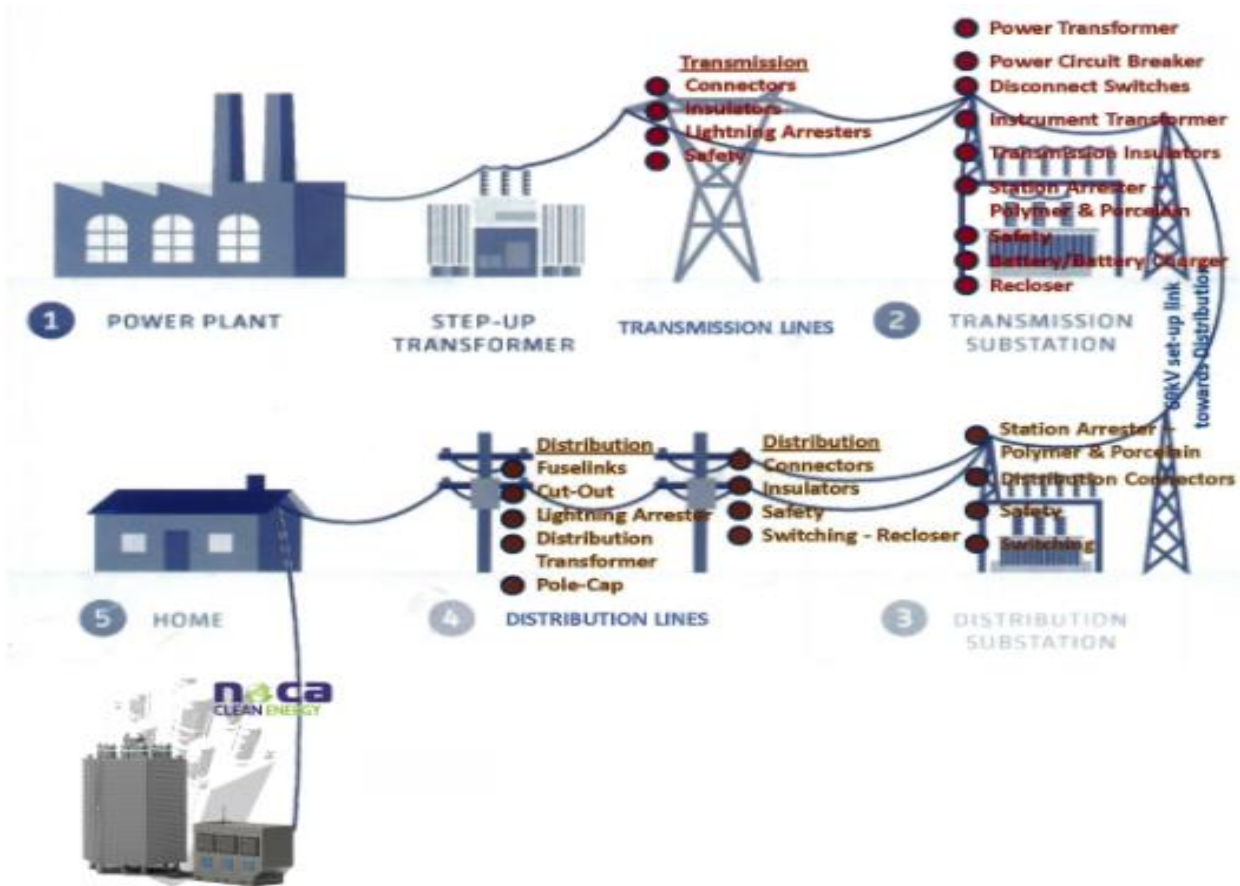
- Output Power Capacity, 5 MW
- Nominal Output Voltage, 480V 3PH
- Output Voltage Distortion, Less than 5% at full load
- Output Frequency (sync to mains), 60Hz – programmable +/-0.5/1/2/4/6/8%
- Output Connections, (1)Hard Wire 4-wire (3PH+G)

B. Physical Specifications

- Maximum Height : 91 inches
- Maximum Diameter: 79 inches
- Aluminum Structure
- Light Grey (NCS 2703-G84Y)

C. Environmental

- Operating Environment: -60 to +90 °C
- Operating Relative Humidity: 0 to 95%
- Operating Elevation: 0 to 999.9 meters
- Audible noise at 1 meter from surface of unit 74.00 dBa
- Online Thermal Dissipation 1100 BTU/hr
- Protection Class NEMA 1 with NEMA 12 optional



APPLICATIONS

On Grid: MTG units can be connected in series to act as a power plant with a generation capacity of up to 1000MW.

Micro-Grid: NOCA Clean Energy is building strategic partnerships with utility providers that are suitable for adopting MTG units into their energy mix. This could be done through NET-METERING.

Off-Grid(Standalone): Due to the low cost, versatility, and portability of the technology, it is ideal for mining companies, research centres, medical facilities, construction firms, and other commercial and industrial enterprises operating in remote locations.

MTG ROI

Installed Capacity of MTG	= 10 KVA
Power Factor(PF)	= 97% (0.97)
Load Factor	= 63% (0.63)
Hours Operations per month	= 24hrs. x 30Days = 720hrs.
Average Kw Demand	= 10KVA x .97 x .63 = 6.111 KW
Kwhrs Consumption per Month	= 6.111 x 720 = 4,399.92
Power Bill per month	= 4,399.92 Kwhrs x 9₱/Kwhr = ₱39,599.28 per month

10 KVA MTG = \$75,000 = ₱3.525M

ROI: $\frac{\text{₱3,525,000}}{\text{₱39,599.28}}$ = $\frac{89 \text{ Months}}{12 \text{ Months}}$ = 7.418 Years

Life Span of MTG = 25 Years

Thank You!